



MISTORIA
ESTATE AGENTS



Room 1 12 Mobberley Road Bolton

£550 Per

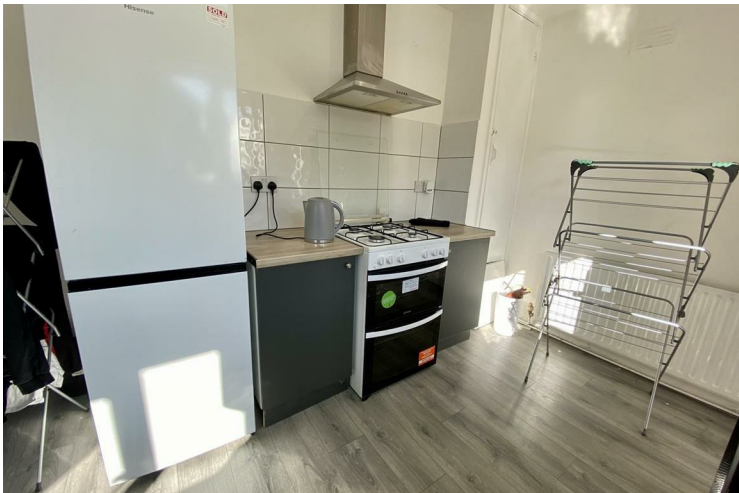
ROOM ONLY - 1 ROOM AVAILABLE
HOUSE SHARE
BILLS INCUSIVE

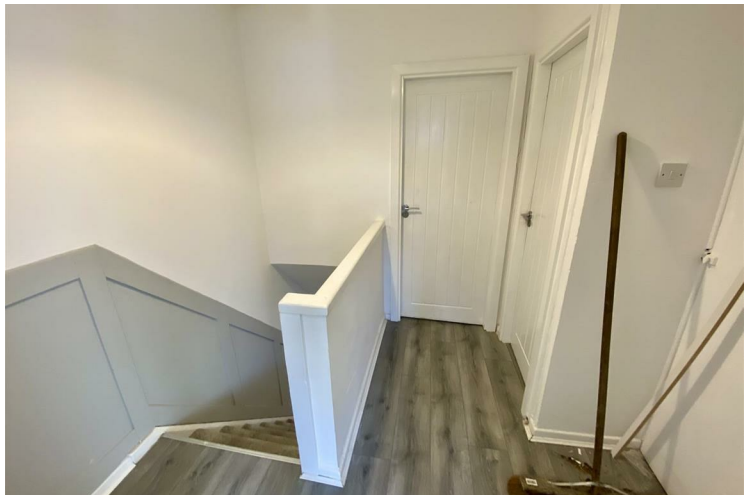
Nestled on Mobberley Road in Bolton, this charming semi-detached house share offers a delightful living experience. Built in 1930, the property retains a sense of character while providing modern comforts. Spanning an impressive 872 square feet.

The property boasts four well-proportioned bedrooms, including a spacious double room, ideal for relaxation and rest. The shared facilities ensure that all residents can enjoy the comforts of home, while the inclusive bills make budgeting a breeze.



- ROOM ONLY - 2 ROOMS AVAILALBLE
- HOUSE SHARE
- BILLS INCUSIVE
- PART FURNISHED
- SHARED FACILITIES
- LARGE DECKED GARDEN SPACE





GROUND FLOOR



1ST FLOOR



Energy Efficiency Rating		
	Current	Potential
Very energy efficient - lower running costs		
(92 plus) A		
(81-91) B		
(69-80) C		
(55-68) D	62	74
(39-54) E		
(21-38) F		
(1-20) G		
Not energy efficient - higher running costs		
England & Wales	EU Directive 2002/91/EC	

Agents Note: Whilst every care has been taken to prepare these particulars, they are for guidance purposes only. All measurements are approximate and are for general guidance purposes only and whilst every care has been taken to ensure their accuracy, they should not be relied upon and potential buyers/tenants are advised to recheck the measurements

Bolton Mistoria
108-110 Deansgate
Bolton
BL1 1BD

01204 800766
info@mistoria.co.uk
mistoria.co.uk

